

Supporting information for:

**“Computationally Guided Assembly of Oriented Nanocubes by
Modulating Grafted Polymer-Surface Interactions”**

Kargal. L. Gurunatha, Sarrah Marvi, Gaurav Arya, and Andrea R. Tao*

NanoEngineering Department, University of California, San Diego

9500 Gilman Drive MC 0448, La Jolla, CA 92093-0448

*E-mail: atao@ucsd.edu

Phone: (858) 822-4237

Fax: (858) 534-9533

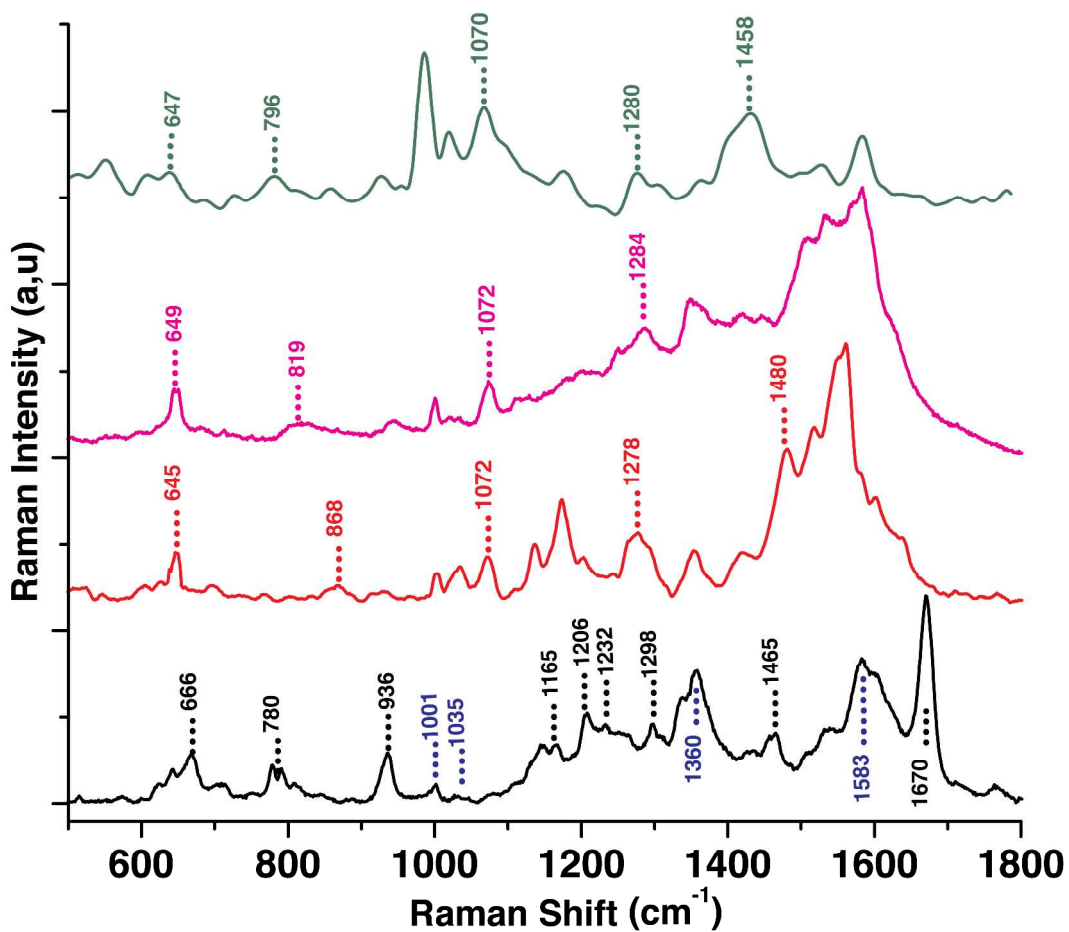


Figure S1. SERS spectra of PVP stabilized Ag nanocube (black) and bi-functional ligand -PEG Dithiol (red), thiol PEG amine (pink) and mPEG thiol (green) exchanged sample.

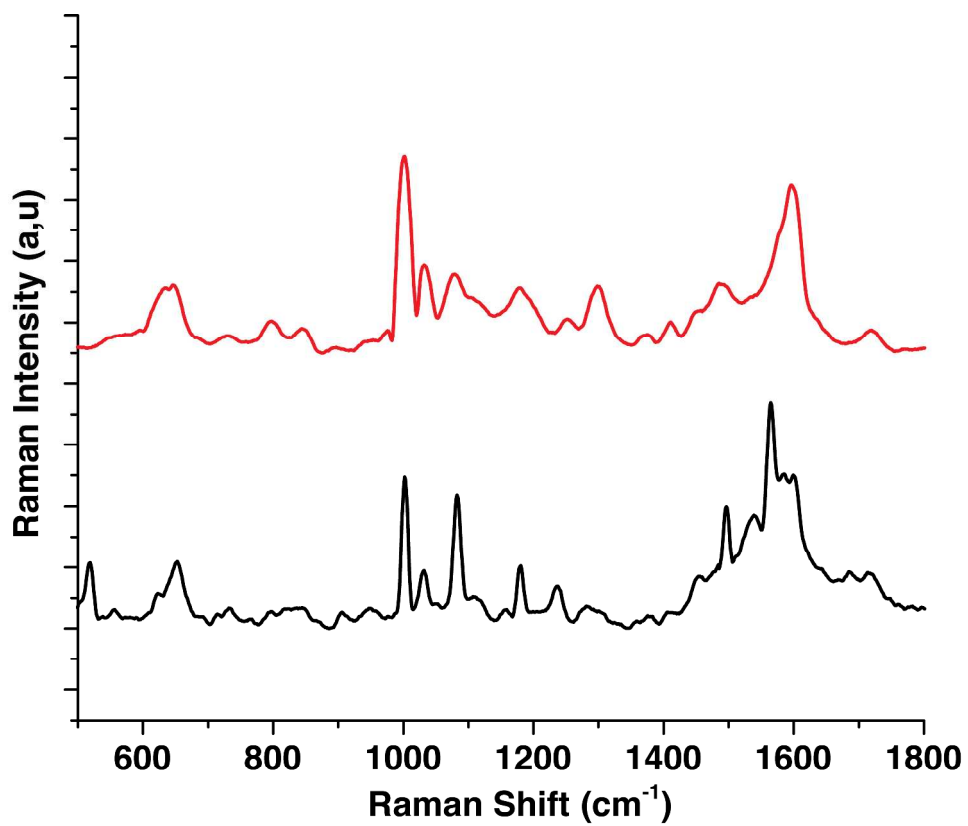


Figure S2. SERS spectra PEG Dithiol-2k (black), PEG Dithiol-5k (red) exchanged silver nanocube sample.

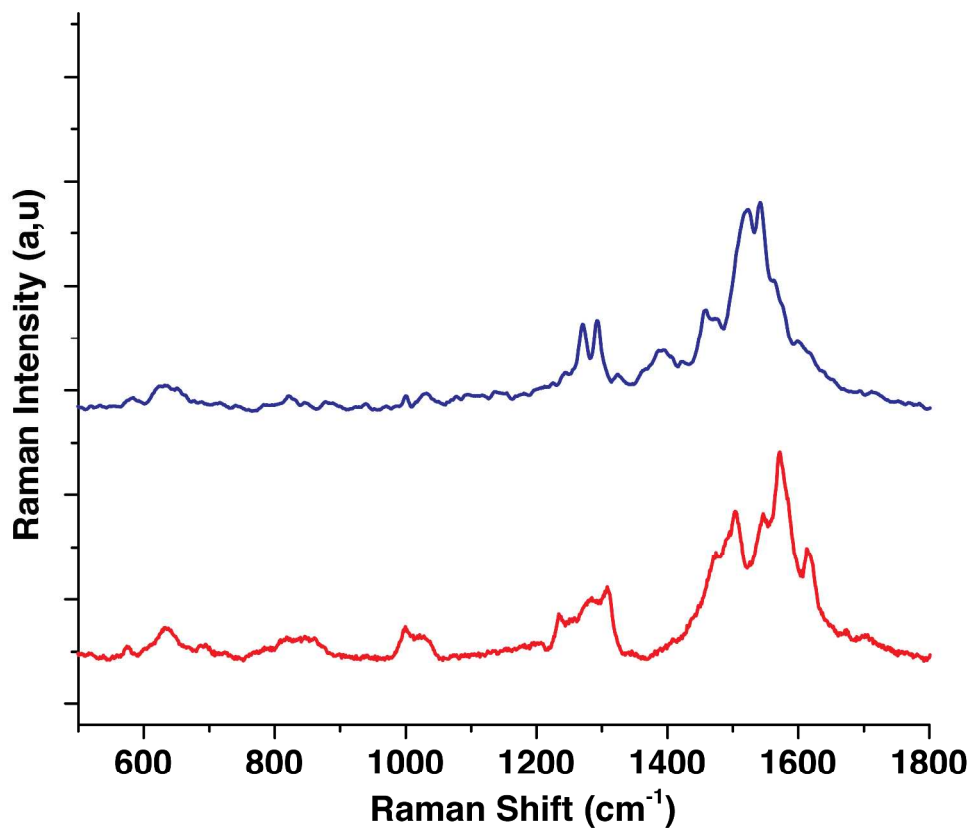


Figure S3. SERS spectra thiol PEG amine-2k (red), thiol PEG amine-5k (blue) exchanged silver nanocube sample.

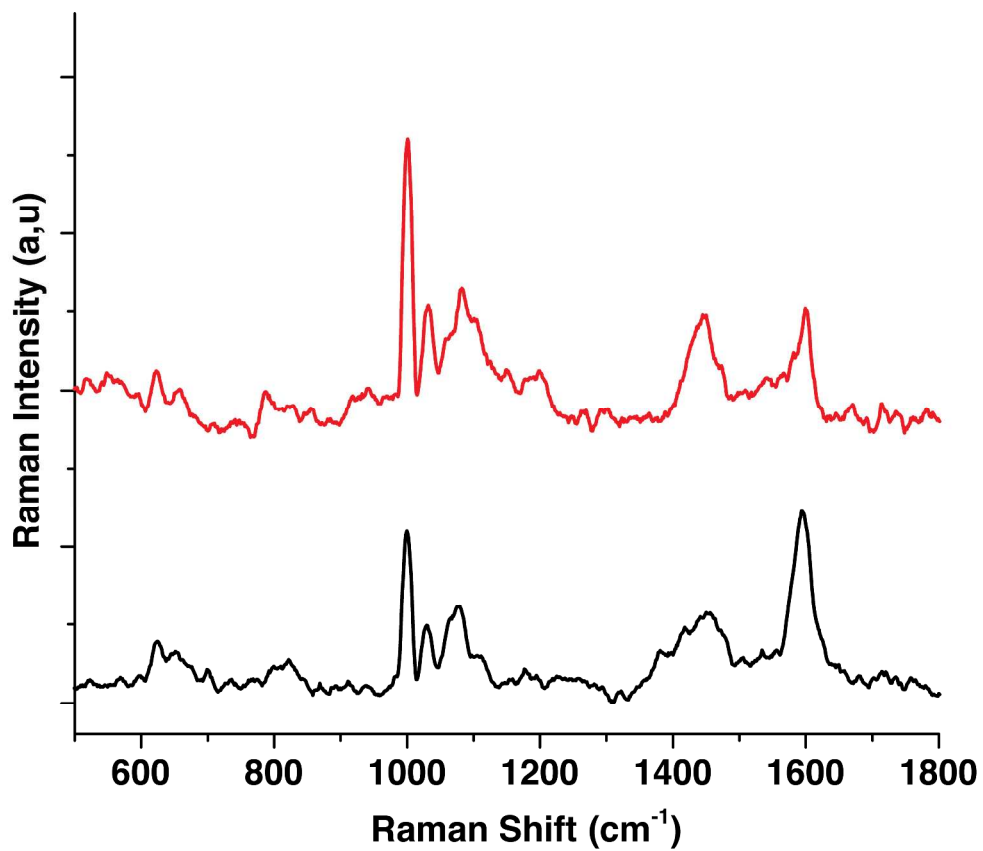


Figure S4. SERS spectra of mPEG-2k (black), mPEG-5k (red) exchanged silver nanocube sample.